



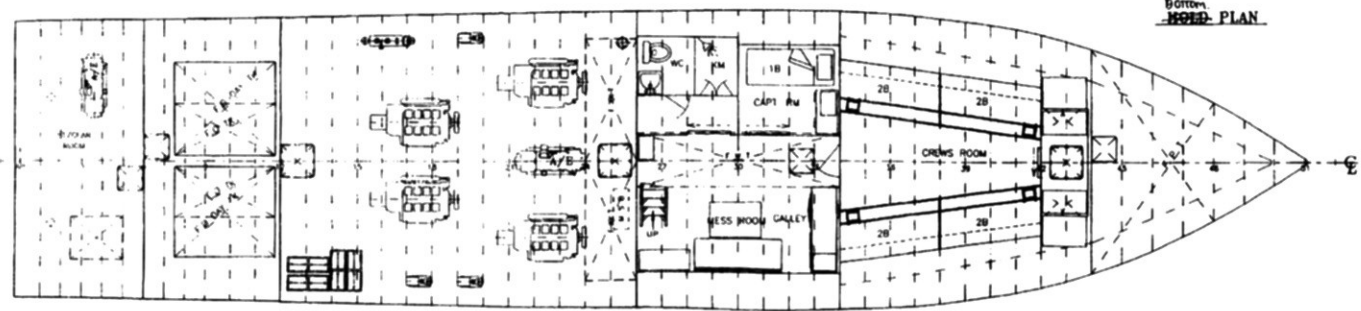
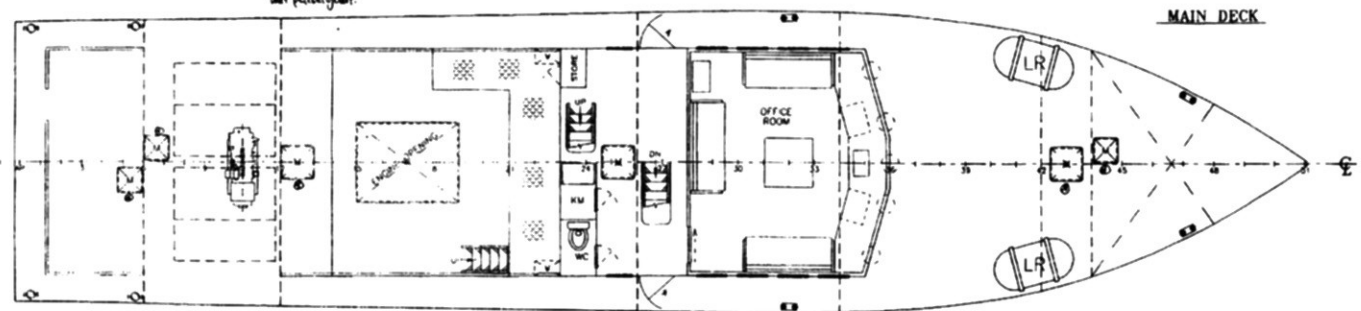
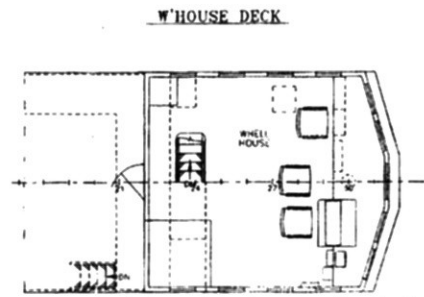
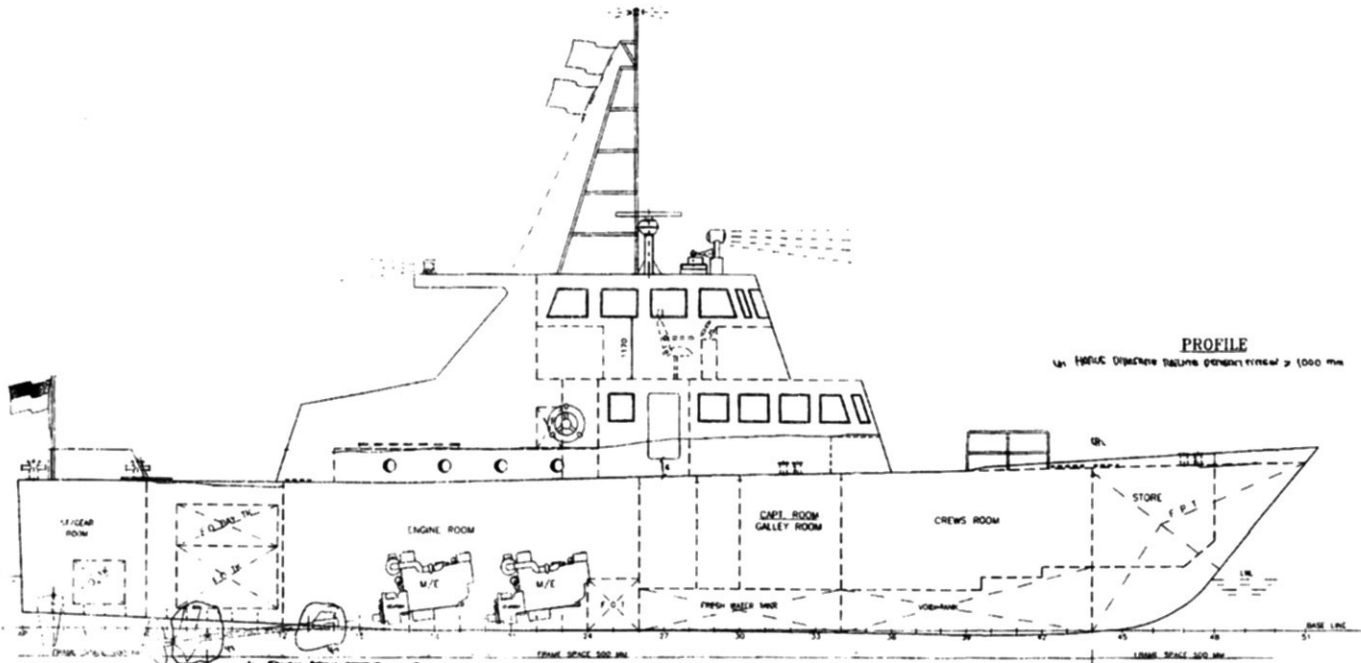
UB. KANAKA PERWIRA

25.40 PATROL BOAT



ITEM	SPECIFICATION	ITEM	SPECIFICATION
Name of Vessel	: MV. KANAKA PERWIRA	Capacity Of Tanks/Deck :	
Operator/Disponent Owner	: PT. Kanaka Dwimitra Manunggal	Fuel Tanks	: 10 T
Flag	: Indonesia	Water Tanks	: 7.00 M3
Call Sign	: YB 4663	Deck Cargo	: 5 x 6,5 M2
Built	: 1991	Deck Area	: Total 32,5 M2
Port of Registry	: Sunda Kelapa Jakarta	Navigation & Communication Equipment :	
Place of Construction	: Jepang	Nautical Apparatus	: Steering Gear 1.5 T-M (60 Kg/cm2) SP-S-015 Tokimec, GPS, Radar
Material	: Hull-High-Tension Steel Ss41 Upper Deck , Bridge House-Light Aluminium Alloy JIS H 4000	Auxiliary Engine :	
Employment	: Patrol Boat	- Mitsubishi Type 4DR7 Prime Rating : 28/20 Kva Cooling System : Water Cooler 1 dia Pompa Air Laut, Manipol : Marine, Voltage : 110 - 220 Volt, Phase : 3, Speed : 1800 Rpm, Frekwensi : 60 Hz, Starter : Electric / 24 Volt. - 33.6 PS x 1800 Rpm 15.0 MOJP Cummins Onan, USA	
Type of Ship	: Patrol Boat	Accomodation :	
Classification	:	Bunk for Passengers	: 1 room 27.09 m2, 2 Beds
Int. Tonnage Cert No.	:	Seat for Passengers	: 12 Seats, can be added into 20 Pax
Length OA	: 25.40 M	Life Saving Appliances	: Inflatable Life Raft TRB-25B (2 unit for 25 persons)
LBP	: 24.60 M	Fire Fighting	: Half Fifi (½ Fifi) 1 (one) Monitor Fire Gund
Breadth Moulded	: 6.00 M	Control Monitoring	: Double Control Rudder + Alt Control Rudder
Depth Moulded	: 2.85 M	Fendering	: Heavy Ful Body
Max. Draught	: 1.00 M		
GRT	: 104.00 Tons		
NRT	: 32.00 Tons		
Machinery :			
Made In	: Detroit		
Type	: GM 12V71T1		
Horse Power	: 2,160 PS (540 PS x 2,17 RPM)		
Total Engine	: 4 Units		
Cruising Speed	: 20 Knots / Max 26.00 Knots		
RPM	: 2,17 RPM		
Supercharger	: Exhaust Turbine GM		
Fuel Oil Type	: HSD Solar		
Propeller	: 3 Blades x ALBC3 x Dia 850 mm x Pitch 830 mm Fixed Pitch		
Reduction Gear Box	: Ratio 2 : 1		
Fuel Consumption	: 180 Liter 4.32 M3/day on speed 20 knots		

PARTICULARS ARE CORRECT AT THE TIME OF PRINTING



BIRO KLASIFIKASI INDONESIA
SEEN
 DIKETAHUI
 Nomor 090211089
 JAKARTA 21 APR 2018

CONDON
 Gambar detail perisai dan struktur
 HARGA DIBERIKAN PER 1000 mm

PRINCIPAL DIMENSION

- L O A 25.40 M
- L B P 24.60 M
- BREADTH 6.00 M
- DEPTH 2.85 M
- DRAFT 1.00 M

Konstruksi hull dan deck dengan komposit
 15 mm

PENTILIK / GALANGAN

MV. KANAKA PERWIRA

SCALE 1:50	DATE	MATERIAL	STEEL
DRAWN			
APPROVED			
GENERAL ARRANGEMENT			

PT. KANAKA LINES
 PT. PELAYARAN KANAKA TRAFIK NA INDONESIA